



Multinational Insurance Brokerage Firm Selects Login VSI to Ensure Seamless Migration to Hyperconverged Infrastructure

-  Brokerage Firm
-  Employee +7,000
-  Missouri
-  Insurance



About Company

The world's largest privately held insurance brokerage firm, providing insurance, risk management, employee benefits and retirement services. The company operates more than 90+ locations in 27 countries.

The Challenge

The world's largest privately-held insurance brokerage firm was running Citrix Virtual Desktops, hosted on VMware vSphere 6.5 and supporting approximately 4,500 users. They wanted to move from a traditional three-tier data center architecture to hyper-converged infrastructure.

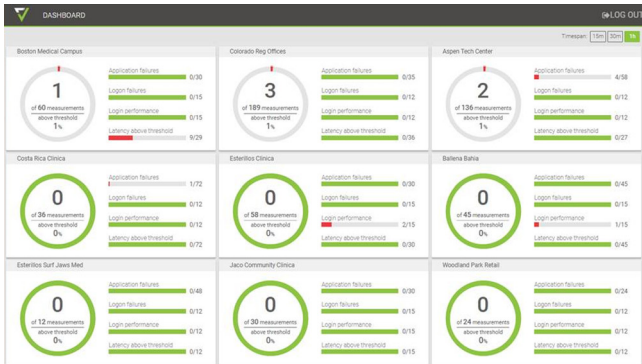
Testing the new configuration was critical to their business continuity. They needed to ensure the new infrastructure could handle their full user capacity, at full load. Given the new architecture, the customer needed to validate performance and density before migrating to production virtual desktops.

The legacy data center consisted of Cisco UCS B Series Blades for computing and an all-flash storage array for storage. Additionally, the performance in the existing production environment had degraded over the past three years.

The Solution

The firm chose Login Enterprise to determine the performance and availability of the new environment. The new data center consisted of approximately three and a half racks of hyper-converged servers with flash internal storage, running Cisco HyperFlex.

Login Enterprise was able to baseline the performance of its existing production environment, as well as the new environments.



The Result

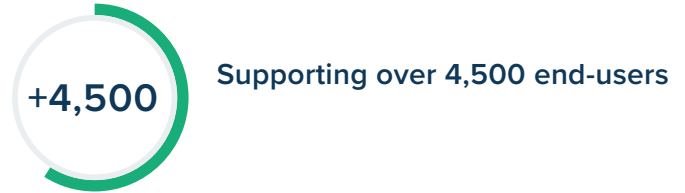
Login Enterprise ensured optimal performance in the new environment, demonstrating that the new infrastructure had significantly better performance than the original environment.

Specifically, Login Enterprise detected a noticeable improvement in both CPU response time and IO utilization. Further, IO performance improved in the new environment.

The Conclusion

Identical Citrix environments were constructed on both the current production and future production data center sites. The goal was to baseline the current production environment and then compare performance and user experience to the proposed future environment. To do this, the same testing was run in both environments.

The default Login Enterprise workload and Knowledge Worker were used for this testing. Knowledge Worker runs a series of Microsoft Office applications, Adobe Reader, print to PDF, and multimedia with various interactions within each of these applications.



✉ info@loginvsi.com

🌐 LoginVSI.com

About Login VSI

Login VSI automatically tests and validates the impact of change to physical, virtual and cloud-based workspaces, to maximize the true end-user experience.